

Natural changes of population 1961 – 2022

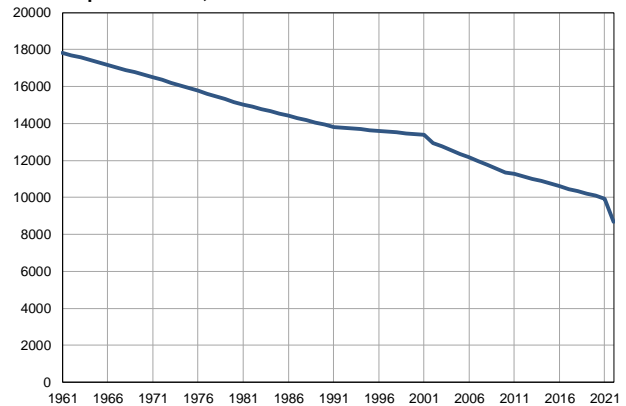
Profile
July 2023

Novi Kneževac

	1961	2022
Population size	17831	8681
Livebirths, Number	288	61
Deaths, Number	196	189
Natural increase, Number	92	-128
Infants deaths, Number	16	0
Livebirths, per 1,000 population	16	7
Deaths, per 1,000 population	11	22
Natural increase, per 1,000 population	5	-15
Infants deaths, per 1,000 livebirths	56	0

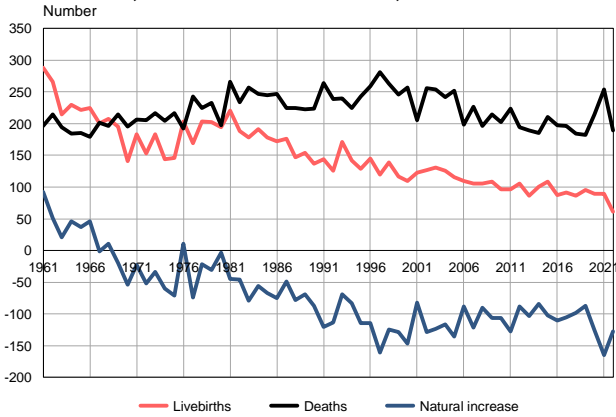
Source: Vital Statistics, SORS

Population size, 1961–2022



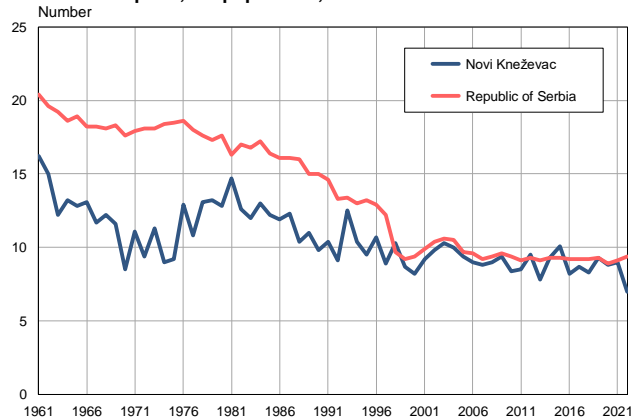
Source: Vital Statistics, SORS

Livebirths, deaths and natural increase, 1961–2022



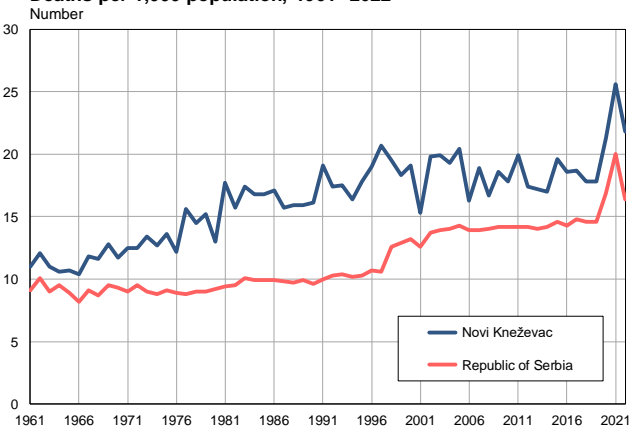
Source: Vital Statistics, SORS

Livebirths per 1,000 population, 1961–2022



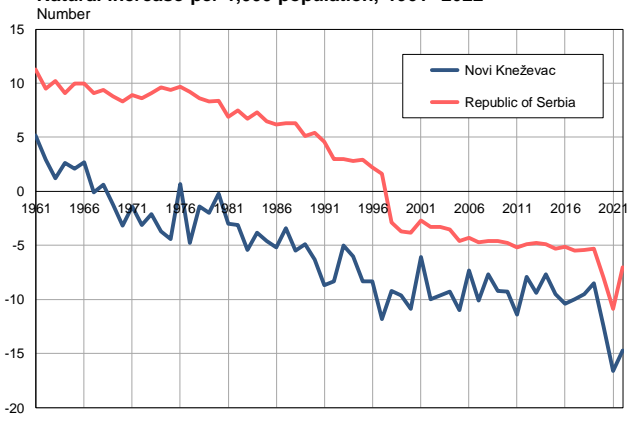
Source: Vital Statistics, SORS

Deaths per 1,000 population, 1961–2022



Source: Vital Statistics, SORS

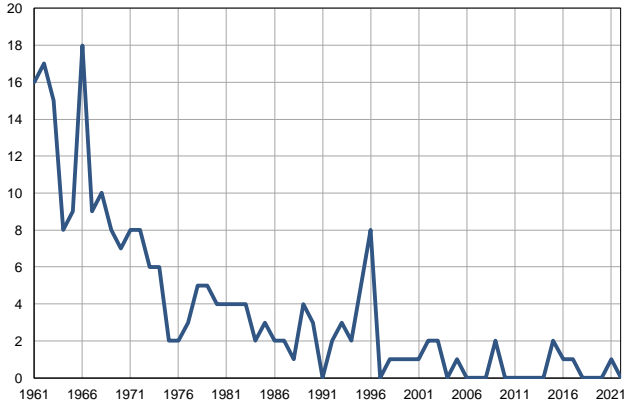
Natural increase per 1,000 population, 1961–2022



Source: Vital Statistics, SORS

Infants deaths, 1961–2022

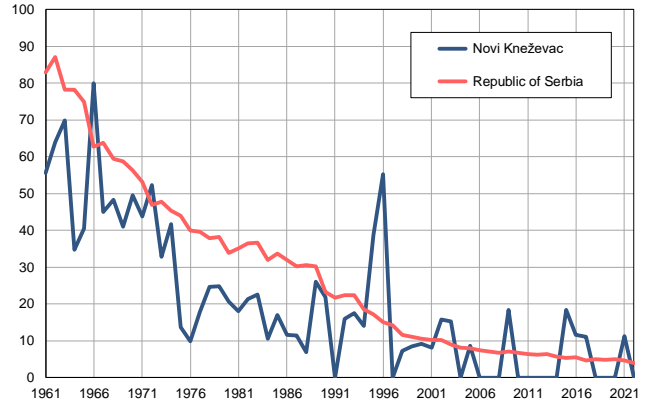
Number



Source: Vital Statistics, SORS

Infants deaths per 1,000 livebirths, 1961–2022

Number



Source: Vital Statistics, SORS

Table. Natural changes of population, Novi Kneževac

Year	Number of population	Livebirths	Deaths	Natural increase	Infants deaths	per 1000 population			Infant deaths per 1000 livebirths
						Livebirths	Deaths	Natural increase	
1961	17831	288	196	92	16	16.2	11.0	5.2	55.6
1962	17699	266	215	51	17	15.0	12.1	2.9	63.9
1963	17567	215	194	21	15	12.2	11.0	1.2	69.8
1964	17434	230	184	46	8	13.2	10.6	2.6	34.8
1965	17302	222	185	37	9	12.8	10.7	2.1	40.5
1966	17170	225	179	46	18	13.1	10.4	2.7	80.0
1967	17038	200	201	-1	9	11.7	11.8	-0.1	45.0
1968	16906	207	196	11	10	12.2	11.6	0.6	48.3
1969	16773	195	215	-20	8	11.6	12.8	-1.2	41.0
1970	16641	141	195	-54	7	8.5	11.7	-3.2	49.6
1971	16509	183	206	-23	8	11.1	12.5	-1.4	43.7
1972	16361	153	205	-52	8	9.4	12.5	-3.1	52.3
1973	16212	183	217	-34	6	11.3	13.4	-2.1	32.8
1974	16063	144	204	-60	6	9.0	12.7	-3.7	41.7
1975	15915	146	217	-71	2	9.2	13.6	-4.4	13.7
1976	15768	203	192	11	2	12.9	12.2	0.7	9.9
1977	15619	169	243	-74	3	10.8	15.6	-4.8	17.8
1978	15471	203	225	-22	5	13.1	14.5	-1.4	24.6
1979	15323	202	233	-31	5	13.2	15.2	-2.0	24.8
1980	15174	194	197	-3	4	12.8	13.0	-0.2	20.6
1981	15026	221	266	-45	4	14.7	17.7	-3.0	18.1
1982	14905	188	234	-46	4	12.6	15.7	-3.1	21.3
1983	14783	178	257	-79	4	12.0	17.4	-5.4	22.5
1984	14663	191	247	-56	2	13.0	16.8	-3.8	10.5
1985	14542	178	245	-67	3	12.2	16.8	-4.6	16.9
1986	14421	172	247	-75	2	11.9	17.1	-5.2	11.6
1987	14300	176	225	-49	2	12.3	15.7	-3.4	11.4
1988	14179	147	225	-78	1	10.4	15.9	-5.5	6.8
1989	14058	154	223	-69	4	11.0	15.9	-4.9	26.0
1990	13937	137	224	-87	3	9.8	16.1	-6.3	21.9
1991	13816	144	264	-120	0	10.4	19.1	-8.7	0.0
1992	13773	126	239	-113	2	9.1	17.4	-8.3	15.9
1993	13731	171	240	-69	3	12.5	17.5	-5.0	17.5
1994	13688	142	225	-83	2	10.4	16.4	-6.0	14.1
1995	13646	129	243	-114	5	9.5	17.8	-8.3	38.8
1996	13602	145	259	-114	8	10.7	19.0	-8.3	55.2
1997	13559	120	281	-161	0	8.9	20.7	-11.8	0.0
1998	13516	139	263	-124	1	10.3	19.5	-9.2	7.2
1999	13473	117	246	-129	1	8.7	18.3	-9.6	8.5
2000	13430	110	257	-147	1	8.2	19.1	-10.9	9.1
2001	13388	123	205	-82	1	9.2	15.3	-6.1	8.1
2002	12953	127	256	-129	2	9.8	19.8	-10.0	15.7
2003	12762	131	254	-123	2	10.3	19.9	-9.6	15.3
2004	12550	126	242	-116	0	10.0	19.3	-9.3	0.0
2005	12346	116	252	-136	1	9.4	20.4	-11.0	8.6

Table. Natural changes of population, Novi Kneževac

Year	Number of population	Livebirths	Deaths	Natural increase	Infants deaths	per 1000 population			Infant deaths per 1000 livebirths
						Livebirths	Deaths	Natural increase	
2006	12170	110	198	-88	0	9.0	16.3	-7.3	0.0
2007	11985	106	227	-121	0	8.8	18.9	-10.1	0.0
2008	11757	106	196	-90	0	9.0	16.7	-7.7	0.0
2009	11549	109	215	-106	2	9.4	18.6	-9.2	18.3
2010	11361	96	202	-106	0	8.4	17.8	-9.3	0.0
2011	11273	96	224	-128	0	8.5	19.9	-11.4	0.0
2012	11121	106	194	-88	0	9.5	17.4	-7.9	0.0
2013	11011	86	189	-103	0	7.8	17.2	-9.4	0.0
2014	10895	101	185	-84	0	9.3	17.0	-7.7	0.0
2015	10761	109	211	-102	2	10.1	19.6	-9.5	18.3
2016	10610	87	197	-110	1	8.2	18.6	-10.4	11.5
2017	10461	91	196	-105	1	8.7	18.7	-10.0	11.0
2018	10325	86	184	-98	0	8.3	17.8	-9.5	0.0
2019	10209	95	182	-87	0	9.3	17.8	-8.5	0.0
2020	10089	89	215	-126	0	8.8	21.3	-12.5	0.0
2021	9910	89	254	-165	1	9.0	25.6	-16.6	11.2
2022	8681	61	189	-128	0	7.0	21.8	-14.7	0.0

Source: Vital Statistics, SORS

Definitions

Population size

Number of population in the respective year. The data on the number of population in 1961, 1971, 1981 and 1991 are census data, while for the inter-census years the number of population was calculated as an average inter-census difference. From 2002 are given the population estimates that were calculated according to the census of population results and the annual statistics of natural mechanical population movements.

Livebirths

Absolute number of live births in the course of a year. Live born child means a child giving vital signs after birth (breathing, i.e. heartbeat), even for the shortest time, regardless the mother's pregnancy duration.

Deaths

Absolute number of deaths in the course of a year. Deceased is a person that whenever after having been born live, shows permanently stopped vital signs.

Natural increase

Natural population increase is the number of live births minus the number of deaths.

Infants deaths

Absolute number of infants deaths in the course of a year. Deceased infant is a child that after having been born live and before aged one year, shows permanently stopped vital signs.

Livebirths, per 1 000 population

Livebirths rate is the ratio of the number of live births and the population size in the respective year. The number of live births is divided by the population size and then multiplied by 1000.

Deaths, per 1 000 population

General mortality rate represents the ratio between the number of deaths and the population size in the respective year. The number of deaths is divided by population size and then multiplied by 1000.

Natural increase, per 1 000 population

Natural population increase rate is the difference between the number of live births and the number of deaths, in relation to the population size in the respective year.

Natural population increase rate = (number of live births - number of deaths) / population size * 1000

Infants deaths, per 1 000 livebirths

Infant mortality rate is the ratio of deceased children under 1 year of age and live births in the respective year. The mortality rate is expressed per 1000 live births.

Infant mortality rate = (number of deceased children under 1 year of age / number of live births) * 1000

Additional info:



Download all database data in Excel format:

[Data](#)



DevInfo profiles:

devinfo.stat.gov.rs/SerbiaProfileLauncher/?lang=en



DevInfo online database:

devinfo.stat.gov.rs/vitalna



For additional information or questions please contact:

devinfo@stat.gov.rs